



Dual Channel Electrochemical Workstation ZIVE BP2A

*Including Internal FRA
10Volts/2Amp*

*For
Battery/Fuel Cell
Supercapacitor/Solar Cell
Corrosion
Material Testing
Sensor/BioElectrochemistry*

The **ZIVE BP2A**, a dual channel potentiostat/galvanostat/FRA, is to support dual-working-electrode cell with one reference and one counter electrode configuration(bi-potentiostat) for sample characterization. Each channel can conduct DC and impedance test simultaneously and/or independently. The **ZIVE BP2A** can be setup to run 2-, 3-, or 4-electrode measurements with a simple setup change.

Each channel is designed under FPGA(Field Programmable Gate Array) and DSP(Digital Signal Processor) control with high speed capability.

DAC Control

: Two sets of high speed 16bit DAC(50MHz) for offset & scanning & one set of 16bit DAC(1MHz) for auxiliary analog output control

ADC Reading

: Two sets of 16 bit 500kHz ADC for reading voltage/current and 4 channel 16bit 250kHz ADCs for auxiliary data input such as temperature, auxiliary voltage etc. It provides high frequency EIS, fast pulse techniques and high speed sampling time.

The **ZIVE BP2A**'s each channel is equipped with a frequency response analyzer(FRA) as standard and it provides high performance impedance measurements over the frequency range 10uHz to 1MHz. ZRA(zero resistance ammeter) function can measure max. 2 Amp in galvanic corrosion technique. The system is supplied with four(4) advanced software packages, which are categorized by application fields. With this advanced software packages, user can widen **ZIVE BP2A**'s flexibility.

System Features

- Versatile high quality dual channel potentiostat/galvanostat/impedance analyzer
- Dual channel potentiostat
 - two fully independent channels
 - dual working electrodes with one reference and one counter electrode configuration available
- FRA function to control an external electronic load or 3rd party potentiostat/galvanostat is available as standard
- 14 EIS techniques capability including multisine
- Current interrupt IR measurement
IR compensation(dynamic, positive feedback)
- Bipolar pulse capability
- Voltage pulse or current pulse charge/discharge test(GSM,CDMA etc.), sine wave function for ripple simulation in battery test package and pulse plating available
- High speed data sampling time per channel
 - 2usec or 3usec depending on data point number
- Fast sweep mode(5000V/sec with 10mV data sampling)
- 3 measurement/control voltage ranges & 11 measurement/control current ranges
- Internal 542,000 data point storage and continuing experiment regardless of PC failure
- Full software packages are included as standard
 - Corrosion test software package(COR)
 - EIS test software package(EIS)
 - Electrochemical analysis software package(EAS)
 - Energy software package(BAT)
- Multichannel configuration available
- Free software upgrade

Hardware Features

- Compact design
- Wide current ranges(2A to 200pA) for various applications (200pA with gain)
- Independent operation by FPGA with DSP per channel
- Impedance measurement capability on each channel with built-in FRA
- Smart LCD display for each channel
- Simultaneous 3 auxiliary voltage measurements
- Temperature measurement as standard
- 1 auxiliary analog output
- 3 digital outputs & 2 digital inputs
- Multichannel configuration available
- External booster(ZB series) interface
- External multiplexer(MUX series) interface for a sequential measurements on multiple electrochemical cells

• Front View



• Smart LCD Display

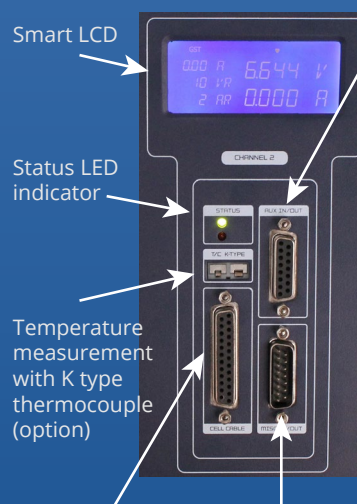


DC Mode



EIS Mode

• Channel View



Aux port:
3 analog inputs
(auxiliary voltage measurement)
1 analog output
2 digital input
3 digital output

Built-in FRA
FPGA/DSP control
Plug-in type

Cell port:
working,
reference,
counter,
working sense

Misc port:
I2C com port for external device control
FRA port
1 sig generator output
1 voltage input
1 current input

Versatility

The **ZIVE BP2A**'s system comes with additional three analog inputs (auxiliary voltage input) and 1 analog output along with 3 digital outputs and 2 digital inputs, and one temperature input for K type thermocouple. It will help users expand the usage of the instrument.

For example,

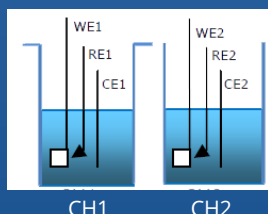
1. User can measure the voltage between working and reference electrode and, by using 2 additional analog inputs(auxiliary voltage input), user can also measure the voltage between reference and counter electrode and between working and counter electrode as well.
2. With analog output, the system can control rotating speed of the rotator, MFC flow rate etc. by $\pm 10V$ full scale.
3. User can control on/off of max. 3 devices by DO etc.
4. This **ZIVE BP2A** can interface with an external booster(ZB series) for high current application.

Safety and Maintenance

1. Even though the communication failure occurs between PC and **ZIVE BP2A**, the system continues its experiment on channel and saves the data into ZIVE memory up to 542,000 data point set. After the communication is restored, ZIVE will transfer saved data to PC automatically or user can transfer data when he/she wants. This function will be highly efficient for long time experiment.
2. User can define a safety condition setting by inputting his/her own safety levels for voltage, current, temperature etc. If the measurement value exceeds this setting value, the system will automatically stop to protect the system and cell.
3. If the control value of voltage or current is different from measured value, the experiment will stop automatically to protect the cell.
4. Automatic calibration function is available for user calibration.
5. The system has its own hardware parameters and calibration data.
6. The channels feature plug-n-play setup for easy installation and removal.
7. The system is controlled from a PC via USB.

Application

The **ZIVE BP2A**, a dual channel electrochemical workstation is ideal for fundamental research in electrochemistry, development and quality assurance of new sensors, corrosion/coatings, electrode material, membrane, conducting polymer, evaluation power device research such as battery materials, fuel cells, super capacitors and solar cells.



Batteries



The system is very well adapted for researches on the cycling behavior of battery. It provides various control modes for battery cycling. It can support EVS (electrochemical voltage spectroscopy)/GITT/PITT test. Fast pulse capability for GSM, CDMA test is included in battery test software package. Pulse profile measurement function to check pulse shape is available. For ripple simulation test, sine wave charging/discharging is available.

Corrosion



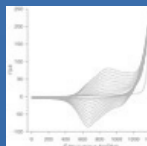
The system is suitable for measuring low corrosion rates and EIS test to evaluate corrosion. The ZRA function is supplied for galvanic corrosion measurement.

Sensors



The **ZIVE BP2A** can be used for sensor research using with DNA chips or screen printed electrodes. System's minimum current range is 200pA(with gain). Cyclic voltammetry, Chronoamperometry and EIS measurement can be used for this application. FET sensor application can be supported too.

General Electrochemistry



The **ZIVE BP2A** is also suitable for the development of bio-research, electron transfer kinetic studies and electrochemical analysis of compounds at low trace levels, where multichannel DC and impedance analysis is beneficial in providing high throughput of results.

Fuel Cells



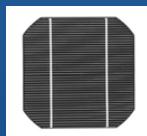
The **ZIVE BP2A** is ideal for characterizing the fuel cells and anodic/cathodic process mechanism at development and research grade. This system can be directly used for PEMFC, DMFC, and DEFC etc. The FRA can control an external electronic load for EIS measurement of fuel cell. I-V curve measurements in a full range of available current(autorange option is active during the I-V scan in order to ensure measurement with continuously high resolution).

Super Capacitors



The **ZIVE BP2A** has fast potentiostat circuit with high speed data acquisition. This function is well applicable to super capacitor testing. Charging/discharging capability is used for this application.

Solar Cells

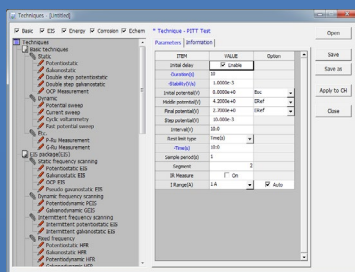


Solar cell development and production requires extensive material and device testing to improve efficiency and match individual cells for panel construction. The **ZIVE BP2A** is the best solution for photovoltaic cell characterization. With system's AI, AO, DI, and DO, the system can monitor other device's signal and also control them.

Main Software **SM**

The Smart Manager (SM) is to control ZIVE BP2A model and it provides user defined sequential test by using sequence file, technique menu and batch file. The batch file allows the users to do a serial test by combining sequence files and/or technique files.

The SM software is easy to use and supports various electrochemical experiments including functions of system control, schedule file editor, real time graph, analysis graph, user calibration, and data file treatment etc.



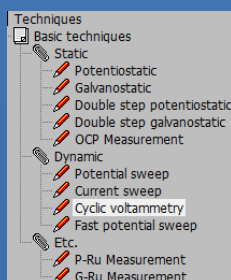
Technique list

Basic Techniques

■ Basic techniques with standard functions

- 1) Potentiostatic
- 2) Galvanostatic
- 3) Double step potentiostatic
- 4) Double step galvanostatic
- 5) OCP measurement
- 6) Potential sweep
- 7) Current sweep
- 8) Cyclic voltammetry
- 9) Fast potential sweep
- 10) Potentiostatic Ru measurement
- 11) Galvanostatic Ru measurement

The above functions can be used sequentially by step control function.

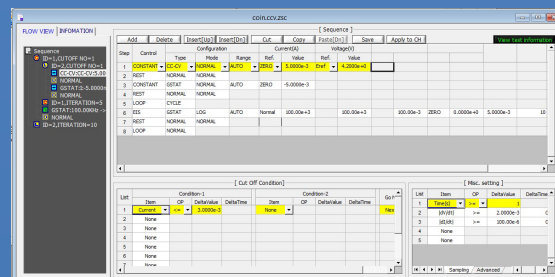


■ Sequence editor

User can design his/her experiment procedure by using TASK sequential routine editor.

● Control Task Parameters

Control Mode		
constant	GSTAT	constant current control
	Crate	constant Crate control
	PSTAT	constant voltage control
	POWER	constant power control
	LOAD	constant load control
	CC-CV	constant current constant voltage control
	Crate-CV	Crate constant voltage control
	CP-CV	constant power constant voltage control
	CL-CV	constant load constant voltage control
	Id	Id control
	Is	Is control
	OCP	OCP control
	GSTAT	current step control
	PSTAT	potential step control
Sweep	GSTAT	current sweep control
	FAST-G	fast current sweep control
	PSTAT	potential sweep control
	FAST-P	fast potential sweep control
EIS	GSTAT	galvanostatic EIS
	PSTAT	potentiostatic EIS
	OCP	OCP EIS
	PSUEDO	pseudo galvanostatic EIS
	HFR G	galvanostatic HFR
	HFR P	potentiostatic HFR
Rest	MsineG	galvanostatic multisine EIS
	MsineP	potentiostatic multisine EIS
rest control		
ZRA		ZRA control
Loop		loop control
Pulse	Vpulse	voltage pulse control
	Ipulse	current pulse control
	GSINE	current sine wave control
	PSINE	potential sine wave control



Sequence editor

- Constant potential, current, C-rate, power, load, OCP
- Sweep potential, current
- Fast sweep potential, current
- Staircase potential, current
- CC-CV, CP-CV, CL-CV, Crate-CV control
- Id, Is control
- EIS control
- Pulse or sinewave control
- Rest(voltage monitoring only)
- Loop(cycle) control

● Cut-off(Vertex) Condition

- Time(step, test, loop, cycle)
- Current, current density
- Voltage
- Capacity
- C-rate
- -dV
- |dV/dt|
- |dI/dt|
- Aux1
- Eoc
- etc.

Condition-1			
Item	OP	DeltaValue	
Step Time	>=	30	
None			
Step End			
Step Time			
Current			
I Density			
Voltage			
Capacity			
-dV			
dI/dt			
dV/dt			
Temp.(C)			
AUX1			
AUX2			
AUX3			
Test Time			
Loop Time			
Cycle Time			
Eoc			
[WHR]			
LCC(%)			
FCC(%)			
FCD(%)			
Power(W)			
SumQ(AHr)			
SumE(VHr)			
Loop Next			
DI Ch.			
Crate			

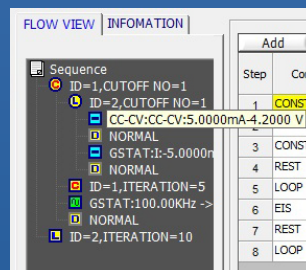
Cutoff condition

● Sampling Condition

- time, |dI/dt|, |dV/dt|, |dI/dt|, |dA1/dt|, burst time

● Flow View

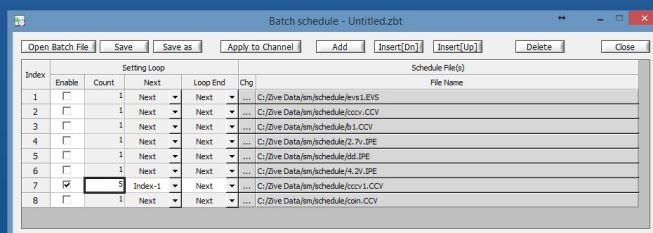
- User can see the sequence flow at a glance.



Flow view

■ Batch function

User can design batch file including multiple technique files and/or sequence files. With this batch file, user can experiment several techniques/sequence in series automatically.



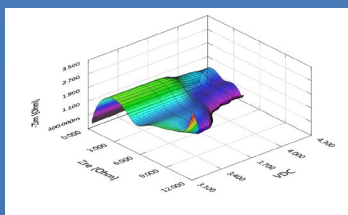
Smart Manager Advanced Software Package

For a wide range of application, advanced software packages for specific experimental techniques are available.

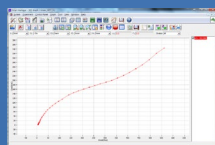
■ EIS Software Package(EIS)

1. Potentiostatic EIS
2. Galvanostatic EIS
3. Pseudo galvanostatic EIS
4. OCP (*1)EIS
5. Potentiodynamic PEIS
6. Galvanodynamic GEIS
7. Potentiodynamic HFR
8. Galvanodynamic HFR
9. Potentiostatic HFR monitor
10. Galvanostatic HFR monitor
11. Multisine potentiostatic EIS
12. Multisine galvanostatic EIS
13. Intermittent potentiostatic EIS
14. Intermittent galvanostatic EIS

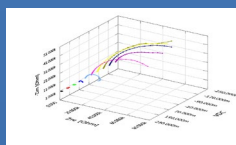
(*1) The system measures open circuit potential before each frequency change and applies AC sine wave on this potential.



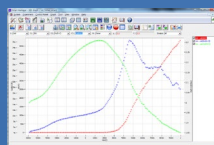
Coin cell intermittent PEIS
3D Nyquist plot by ZMAN



OCP EIS



Potentiodynamic PEIS

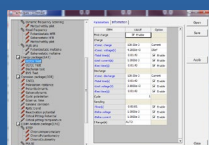


Rs, Cp & Idc vs Vdc plot

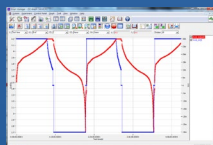
■ Energy Software Package(BAT)

BAT software supports IR measurement.

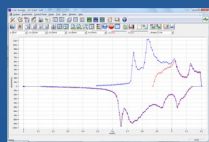
1. Battery test techniques
 - CC/CV test for cycle life test of lithium battery
 - CC/CC test for cycle life test of NiCd or NiMH battery
 - Discharging test
 - EVS(Electrochemical voltage spectroscopy)
 - Variable scan rate CV
 - Potentiostatic IV curve
 - Galvanostatic IV curve
 - Steadystate CV
 - GITT
 - PITT



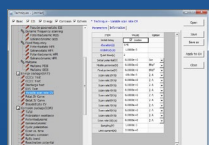
CC/CV test



CC/CC test

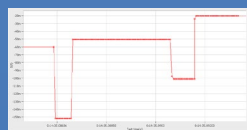


EVS test



Variable scan rate CV

- Pulse mode is available for GSM & CDMA profile. Pulse shape profile can be measured by user's demand.



Pulse shape profile monitor
(micro seconds order)



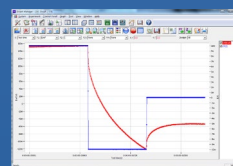
Current sine wave
(charge ripple simulation)

2. Control mode
 - Charge: CC, CC-CV, pulse, sine wave
 - Discharge: CC, CP, CR, pulse, sine wave
3. Cutoff condition
 - time, voltage, current, power, temperature, auxV etc.

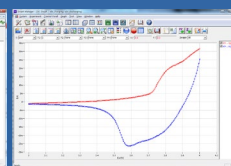
Various battery charge/discharge test is available including pulse discharge for GSM and CDMA application.

■ Electrochemical Analysis Software Package(EAS)

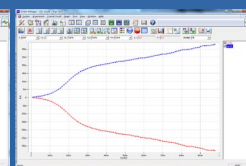
1. Step techniques
 - CA(Chronoamperometry)
 - CC(Chronocoulometry)
 - CP(Chronopotentiometry)
2. Sweep techniques
 - LSV(Linear sweep voltammetry)
 - SDV(Sampled DC voltammetry)
 - Fast CV
 - Fast LSV
3. Pulsed techniques
 - DPV(Differential pulse voltammetry)
 - SWV(Square wave voltammetry)
 - DPA(Diff. pulse amperometry)
 - NPV(Normal pulsed voltammetry)
 - RNPV(Reverse normal pulse voltammetry)
 - DNPV(Differential normal pulse voltammetry)



50usec sampling



Sampled DC voltammetry



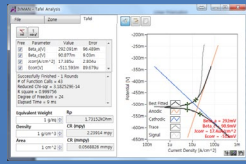
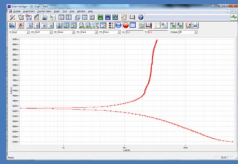
NPV & RNPV overlay

■ Corrosion Software Package(COR)

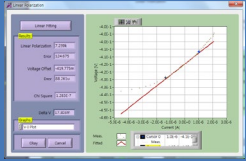
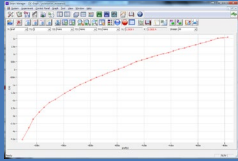
Corrosion technique supports IR compensation.

1. Tafel(Tafel experiment)
2. Rp(Polarization resistance)
3. Potentiodynamic
4. Galvanodynamic
5. Cyclic polarization
6. Ecorr vs. time
7. Galvanic corrosion
8. RpEc trend
9. Reactivation potential
10. Critical pitting potential

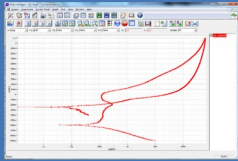
Each software package's upgrade will be provided at free of charge.



Tafel experiment



Rp (Polarization resistance)



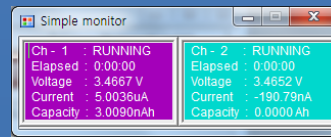
CYPOL (Cyclic polarization resistance)

Strip Chart

Strip chart recorder function provides real graph function independently. You can monitor 2 Y axis data such as voltage, current, AuxV1,2,3, temperature, power, capacity etc. in real time and can select channel(s) which you want to monitor. You can also set max. data point for showing strip chart length.



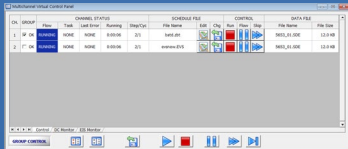
Simple Monitor



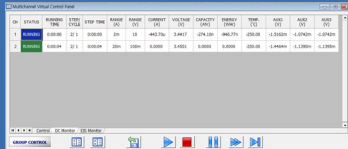
This display window is for monitor the major data values and channel status for multiple channel operation.

Control & Real Time Graph

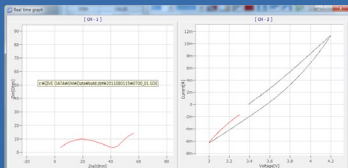
Smart Manager provides 2 kinds of control & data acquisition with real time graph.



Dual channel control panel



Dual channel real time graph

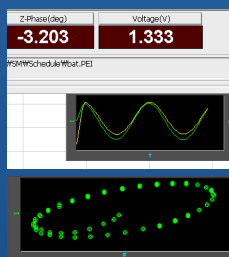
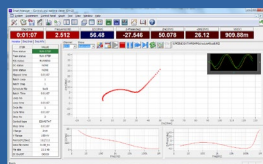


Dual channel data monitor (EIS data/DC data selectable)

User can control and monitor for specific channel in details and he/she can monitor data in VOI (value of interest) window and channel status in one window. Real time graph's X, Y axis format will be changed per technique automatically. It can be defined by user's demand per technique.

For experiment using sequence file or batch file, user can designate X, Y parameter on three different real time graph. The real time graph's format can be also selected. The channel number which you control can be changed in this window. Even if you control the channel in this mode, you can also monitor and control the same channel in this control panel at same time.

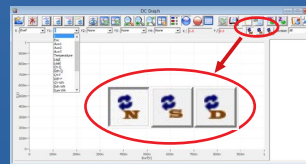
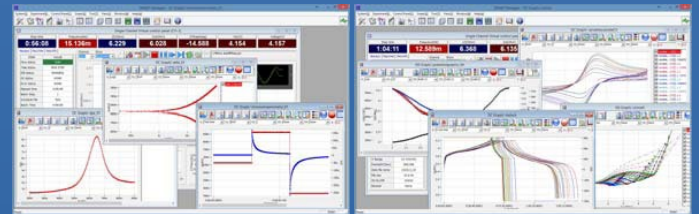
The real time graph and VOI will be changed depending on DC test or impedance test automatically. The virtual control panel always displays the graph for recent test result. For impedance measurement, wave monitor will be displayed on real time graph to check wave's quality. This monitor can be switched to Lissajous (I vs. E) plot.



Graph



Smart Manager's graph function is to simplify the operation. There are 3 kinds of graph per each experiment. You can change X, Y1, Y2, Y3, Y4 axis parameter as you want. Each graph provides shortcut buttons. When you click these buttons, the format of the graph will be changed accordingly.



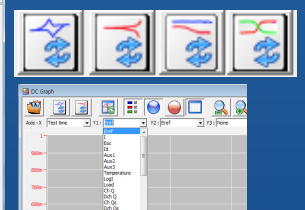
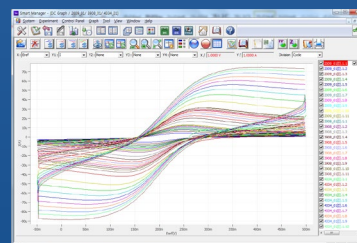
In DC and Cycle graph, whenever you click or the parameters which are related to current such as current, capacity, energy, power, load, etc., will be changed into calculated specific value or density value, respectively.

: value divided by weight active area

: value divided by active area

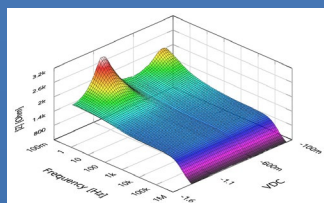
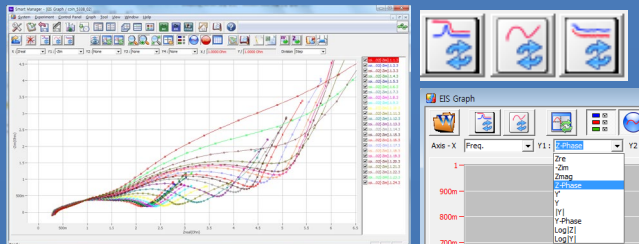
1) DC Graph

- For general data display
- 4 shortcut buttons: I vs. V, E vs. LogI, V, I vs. time, V vs. Q
- Graph parameters: time, Eref, I, Eoc, Id, Aux1, Aux2, Aux3, temp, LogI, Load, ChQ, DchQ, ChQs, DchQs, Ch P, Dch P, Ch-Wh, Dch-Wh, Sum Wh, Sum Q, Sum |Q|, |Q|, Rp, dQ/dV



2) EIS Graph

- For EIS data display
- 3 shortcut buttons: Nyquist plot, Bode plot, Cs vs. frequency
- Graph parameters: Frequency, Zre, -Zim, Zmag, Zph, Y, Yim, Yr, |Y|, Yph, LogZ, LogY, Rs(R-C), Cs(R-C), Rp(R|C), Cp(R|C), Rs(R-L), Ls(R-L), Q(R-L), time, Vdc, Idc, temp, Aux(1,2,3)

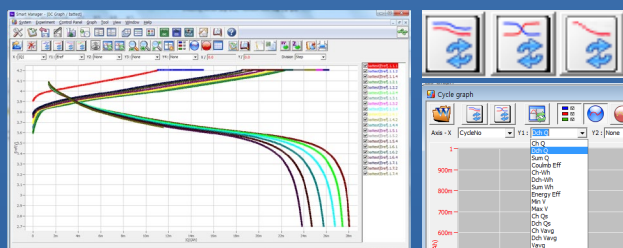


3D Bode Plot by ZMAN

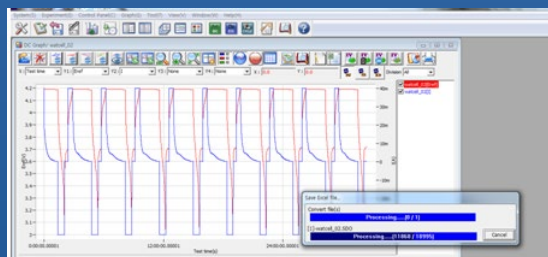
Technique used: Potentiodynamic impedance measurement by using a corrosion cell

3) Cycle Graph

- For battery cycle data display
- 3 shortcut buttons: cycle capacity, cycle average, Log(cycle No) vs. depth of discharge plot.
- Graph parameters: cycle number, Ch Q, Dch Q, Sum Q, Coulomb Eff, Ch-Wh, Dch-Wh, Sum Wh, Energy Eff, MinV, MaxV, ChQs, DchQ, ChVavg, DchVavg, Vavg



Data Export to ASCII & Excel File



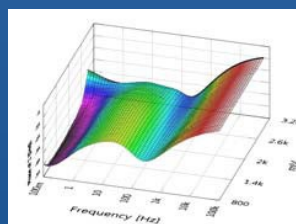
Selectable between 'Convert data on graph only' and 'Convert selected file(s)'

Data Analysis Software

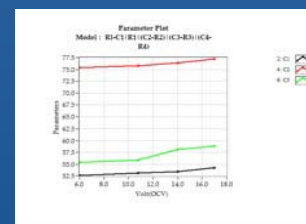
ZIVE data file can be used for analysis by using external IVMAN™ software for DC analysis, IVMAN DA™ software for battery data analysis, IVMAN PA™ software for photo-voltaic cell data analysis and ZMAN™ software for EIS data analysis without license.

ZMAN™ EIS Data Analysis Software

- Model simulation and fitting
- 2D- and 3D-Bode- and Nyquist plots
- Automatic equivalent circuit model search function
- Project concept to handle multiple EIS data analysis
- Parameter plot from fitted elements value (License code is needed.)
- Compatible with data format from Zahner, Gamry, Ametek etc.
- Various weighting algorithm
- Model library and user model
- KK plot
- Batch fitting for project data
- Impedance parameter simulation
- Interpolate bad data
- Black-Nichols plot
- 3D graph setting option
- Improved model editor
- Application model library for automatic searching
- Parameter simulation of model
- Genetic algorithm option for initial guessing
- Automatic initial guessing
- Trace movie function on fitting
- Free for ZIVE's data format(*.seo, *.wis) analysis (No license code required.)
- Circle fitting
- Data editing available (insert, delete, edit)
- Add/subtract element parameters
- Add/subtract model parameters
- Impedance, Z in polar, admittance, Y in Polar, modulus, M in polar, dielectric constant, E in polar. data display
- Empty cell capacitance calculation
- Find file function
- Data replacement by formula function
- Cursor data display
- Model finding result automatic sorting by Chi square value
- R, C, R, L, Q preview & graphic
- ZHIT function
- Mott-Schottky analysis
- Donor density vs. Vfb graph
- C vs. voltage graph

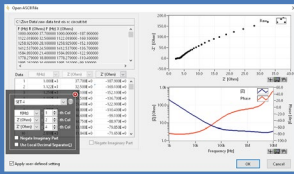


3D Bode plot for series measurement

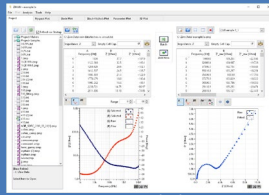


Parameter plot

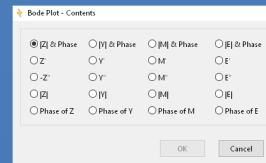
Electrochemical Workstation ZIVE BP2A



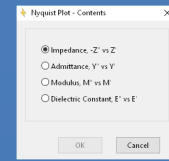
Importing 3rd parties ASCII data file



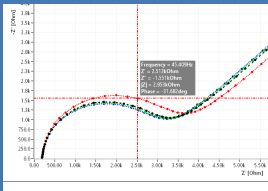
Project manager with data preview



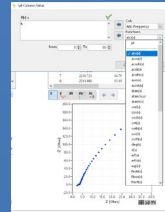
2D Nyquist plot



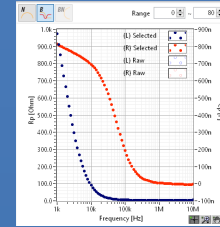
2D Bode plot



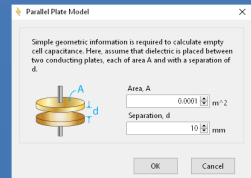
Cursor data display



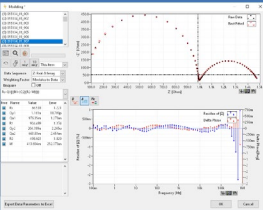
Data replacement by formula function



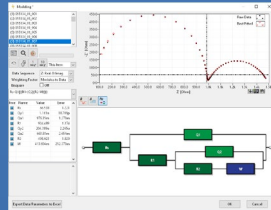
Rp,Cp vs frequency (R|C)



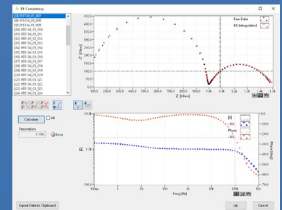
Empty cell capacitance



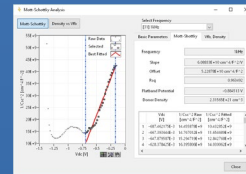
Fitting display



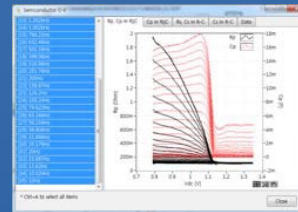
Donor density vs. Vfb graph and analysis



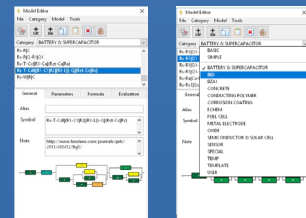
KK consistency



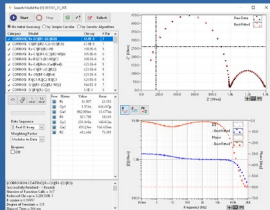
Mott-Schottky analysis window



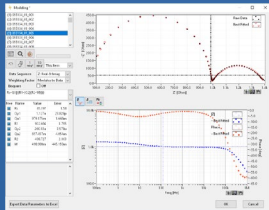
C/R-V graph



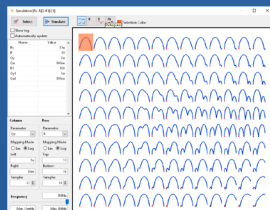
Model editor & model library



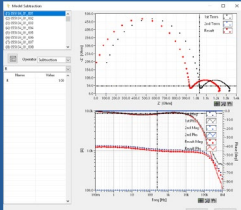
Automatic model searching



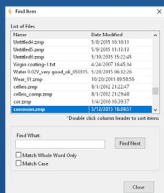
LEVM fitting



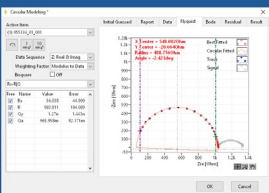
Parameter simulation



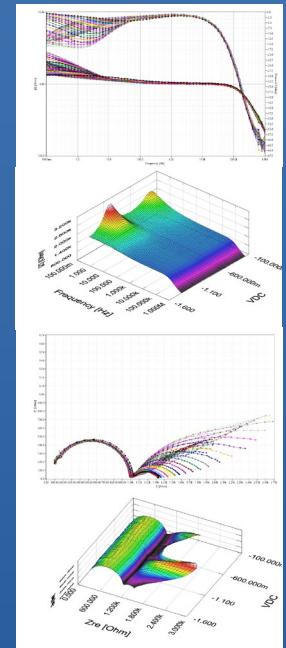
Element add/subtraction



Finding data file menu



Circular fitting



Bode & Nyquist overlay & 3D plots

IVMAN™ DC Data Analysis Software



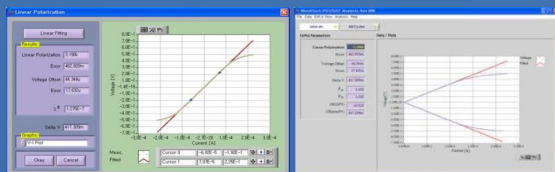
IVMAN™ software package consists of

- IVMAN software
- IVMAN utilities
- IVMAN differential analysis software
- IVMAN photo voltaic cell analysis.
- IVMAN Tafel analysis
- IVMAN extractor
- IVMAN peak find module



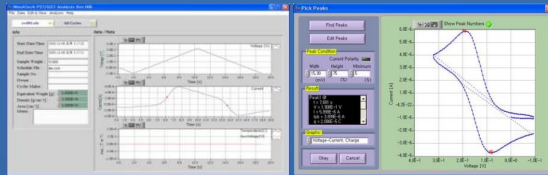
IVMAN™ Main Software

- Ideal for DC corrosion data analysis and electro-analytical data analysis
- Initial guessing function on Tafel analysis
- Polarization resistance fitting
- 3D graph
- Find peak function
- Interpolation, differentiation, integration etc.
- Reporting function



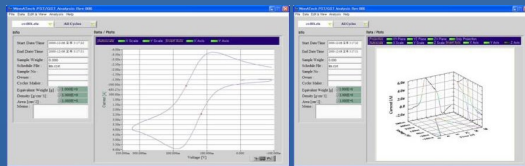
Polarization resistance fitting

Polarization analysis result



Time graph

Find peak menu

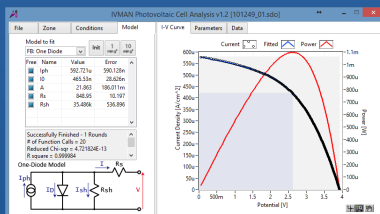


CV graph

3D graph



IVMAN™ Photovoltaic Cell Analysis

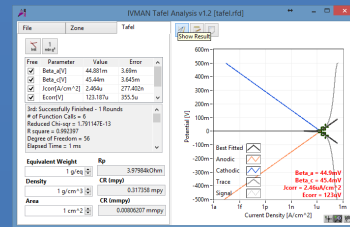


- Automatic analysis of parameters
- : open circuit voltage, open circuit current, max. power, efficiency photo induced current, diode quality factor, series resistance, etc.



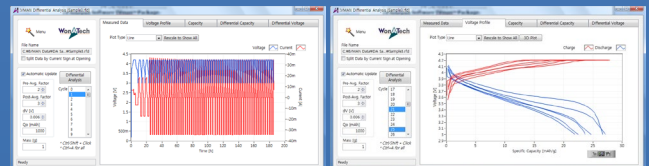
IVMAN TA™ Tafel Analysis

- Simple Tafel calculation



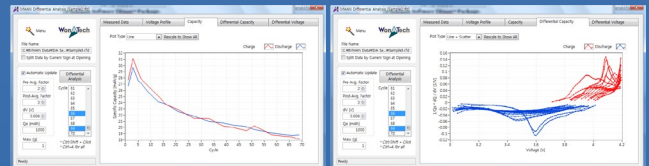
IVMAN DA™ Battery Test Data Analysis Software

- Battery test data analysis
- Electrochemical voltage spectroscopy (dQ/dV vs. V)
- Voltage vs. Capacity analysis (V vs. Q)
- Cycle graph (Q vs. cycle)
- Differential voltage graph (dV/dQ vs. Q)



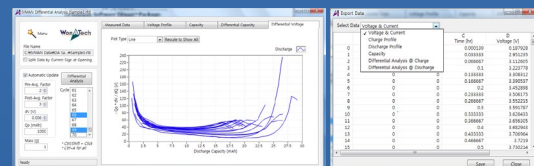
Measured data

V vs. Q



Cycle graph

dQ/dV vs. V

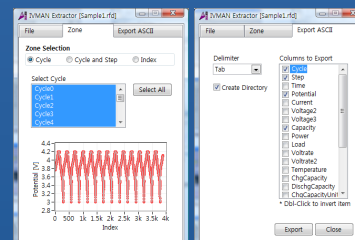


dV/dQ vs. Q

Export ASCII file

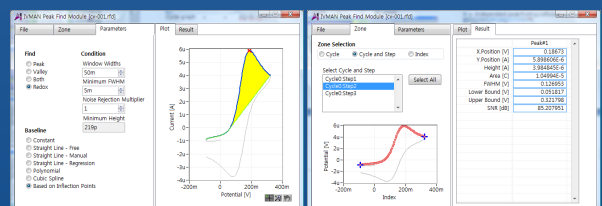
IVMAN EX™ Extractor

- Extracting data by cycle number or step
- Exporting ASCII file



IVMAN PF™ Peak Find Module

- Independent peak finding software

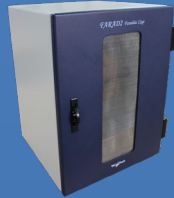


Optional Accessories

- Universal Electrode Holder
 - electrode and glass vial are not included.



- Faraday Cage
 - size : 300 x 300 x 398mm(WxDxH)



- Corrosion Cell Kit



CCK1 Standard Type With Optional FSH2 & Thermometer



WCCK1 Water-Jacketed Type With Optional FSH2 & Thermometer



Alkaline Resistance Cell made with Teflon

- Flat Cell Kit



FCK2 Standard Type



WFCK2 Water-Jacketed Type

- Plate Cell Kit



PTC1



PTC2

- Permeation Cell



PMC1 Standard Type



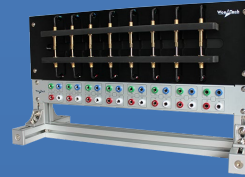
WPMC1 Water-Jacketed Type

- Flat Specimen Holder
- Pt Plate Electrode
- Photo Echem Cell Kit

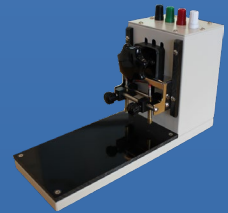


PCELL1

- Battery Jig & Coin Cell Jig
 - for cylindrical cell and/or coin cell
 - 4 probe type



- Pouch Cell Jig
 - pull-down or banana connector type contact
 - 4 contact point type (Kelvin probe)



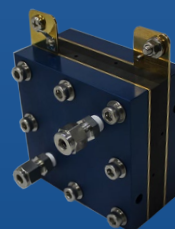
- Power Booster
 - for high voltage/high current application
 - modular type design
 - EIS capability
 - sine wave simulation available



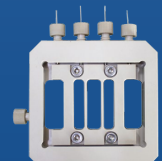
- Through-Plane Conductivity Test Jig
 - for through plane conductivity measurement
 - 2 probe type



- Single Cell Hardware Fixture
 - for PEMFC and DMFC
 - max. temp. : 120°C or 180°C
 - active area : 5, 9, 25, 50, 100cm²
 - MEA is not included.



- Membrane Conductivity Cell
 - for 5, 9 and 25cm² fuel cell hardware fixture
 - material : PEEK(cell body), platinum(wire)
 - operating temp. : up to 130°C



Electrochemical Workstation ZIVE BP2A

Specification

Main System	
PC communication	USB2.0 high speed
Line voltage	100~240VAC, 50/60Hz
Max. channel number	2 independent channels per unit
Max. output power	24Watt per channel
LCD display	2ea
Size/weight	198.2X281.9X362.6mm(WxHxD) / 9.25kg

System	
Cell cable	1 meter shielded type(standard) working, reference, counter, working sense
Control DAC	DSP with FPGA 2x16bit DAC(50MHz) for bias & scan 1X16bit DAC(1MHz) for analog output
Data acquisition ADC	2x16bit ADCs(500kHz) for voltage, current 1x16bit ADCs(250kHz) for auxiliary voltage and temperature reading
Calibration	Automatic
Filter selection	4ea(5Hz, 1kHz, 500kHz, 5MHz)
Scan rate	0~200V/sec in common mode 0~5000V/sec in fast mode
LED indicator	Busy, Run
Internal data memory	542,000 points
LCD display	DC & EIS mode automatically

Power Amplifier(CE)	
Power	24Watt (12V@2A)
Compliance voltage	±12V
Max. current	±2A
Control speed selection	8ea
Bandwidth	4MHz
Slew rate	15V/usec

Potentiostat Mode (voltage control)	
Voltage control	
Control voltage range	±10V, ±1V, ±100mV
Voltage resolution	16 bit per each range
Voltage accuracy	±0.02% fs(gain x1)
Max. scan range	±10V vs. ref. E
Current measurement	
Current range	11 ranges(auto/manual setting) 2nA~2A 200pA with gain
Current resolution	16 bit 60uA, 6uA, 600nA, 60nA, 6nA, 600pA, 60pA, 6pA, 600fA, 60fA, 6fA
Current accuracy	±0.02% f.s.(gain x1)>200nA

Galvanostat Mode (current control)	
Current control	
Control current range	max. ±2A ± full scale depending on selected range
Current resolution	16 bit 60uA, 6uA, 600nA, 60nA, 6nA, 600pA, 60pA, 6pA, 600fA, 60fA, 6fA
Current accuracy	±0.02% f.s.(gain x1)>200nA f.s.
Voltage measurement	
Voltage range	10V, 1V, 100mV
Voltage resolution	16 bit 0.3mV, 30uV, 3uV
Voltage accuracy	±0.02% fs (gain x1)

Electrometer	
Max. input voltage	±10V
Input impedance	2x10 ¹³ Ω 4.5pF
Bandwidth	>22MHz
CMRR	>114dB

EIS(Internal FRA) for System	
Frequency range	10uHz~2MHz
Frequency accuracy	<0.01%
Frequency resolution	5000/decade
Amplitude	0.1mV~5Vrms(Potentiostatic) 0.1~70% f.s.(Galvanostatic)
Mode	Static EIS: Potentiostatic, Galvanostatic, Pseudogalvanostatic, OCP Dynamic EIS: Potentiodynamic, Galvanodynamic Fixed frequency impedance: Potentiostatic, Galvanostatic, Potentiodynamic, Galvanodynamic Multisine EIS: Potentiostatic, Galvanostatic Intermittent PEIS/GEIS

Interfaces for System	
Auxiliary port	
Digital output	3(open collector)
Digital input	2(photo coupler)
Auxiliary voltage inputs	3 analog inputs: ±10V For measurement of WE vs. CE CE vs. RE or other signal
Analog output	1 analog output: ±10V For stirrer, MFC, RDE, etc.
Misc. port	
Sig generator output	1 analog output for FRA output or waveform generation output
Peripheral communication	I2C to control external devices
Temp. measurement	1 K-type thermocouple input
Zero Resistance Ammeter	2nA ~ 2A ranges

Software	
Max. step per experiment	1000
Shutdown safety limits	Voltage, current, temperature, etc.
Max. sampling rate	2usec or 3usec depending on data point number
Min. sampling time	Unlimited
Sampling condition	Time, dv/dt, di/dt, temperature, etc.

PC Requirement	
Operating system	Windows 7/8/10(32bit/64bit OS)
PC specification	Pentium4, RAM 1GB or higher
Display	1600x900 high color or higher
USB	High speed 2.0

General	
Dummy cell	One external dummy cell included
Thermocouple	K-type, 1.5 meter long(option)
Impedance analysis S/W	ZMAN™ software
DC data analysis S/W	IVMAN™ software package

The specifications are subject to change without notice.

Windows is a registered trade mark of Microsoft Corporation.

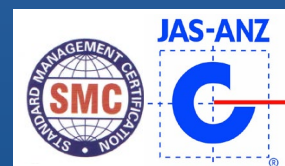
Designed by

ZIVE LAB
www.zivelab.com



WonATech Co., Ltd.
7, Neunganmal 1-gil, Seocho-gu,
Seoul, 06801, Korea
Phone: +82-2-578-6516
Fax: +82-576-2635
e-mail) sales@wonatech.com
website: www.wonatech.com

Local Distributor



ISO 9000 & ISO 14000 Qualified